

Gold Key Associates

The Key to Your Dreams

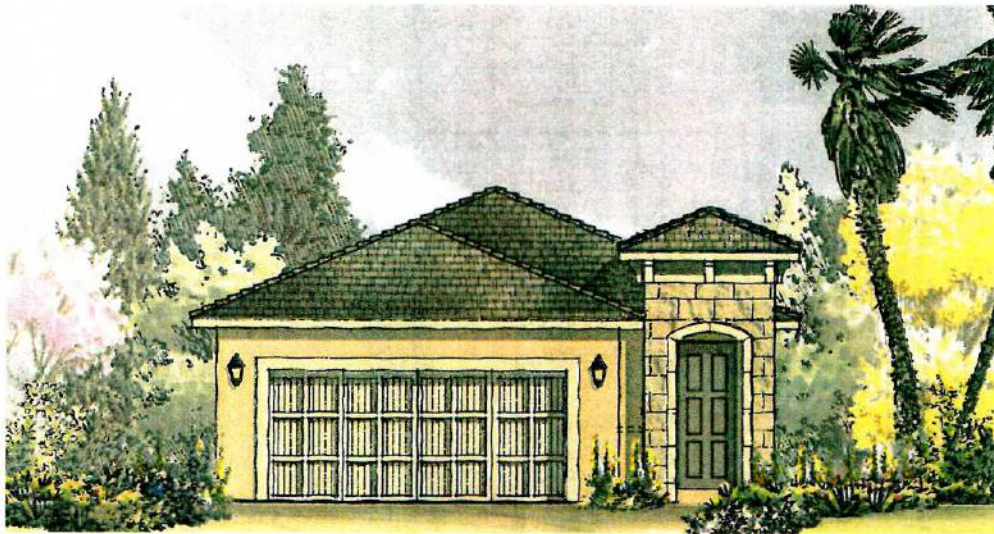
www.Solivita55-plus.com

Siesta Key

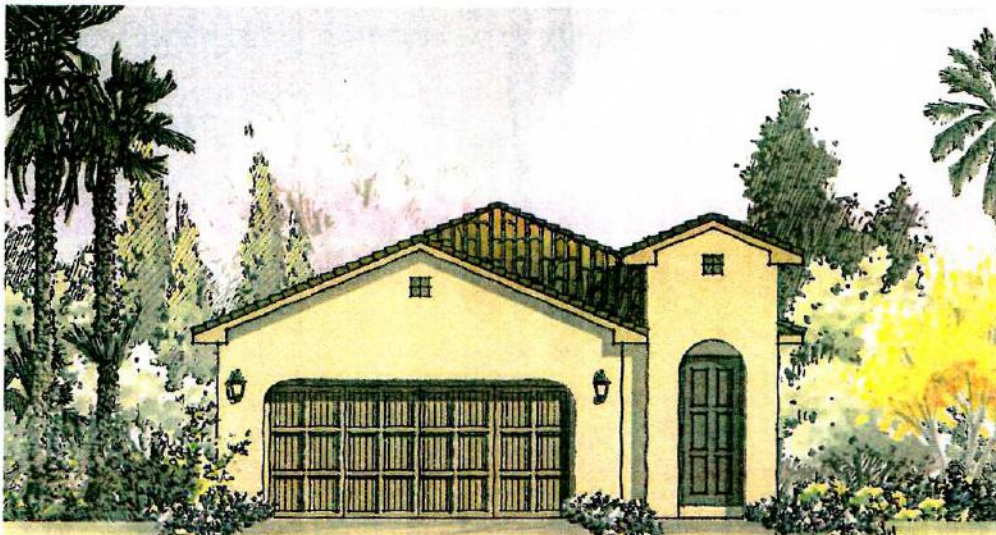
The Sabal
Palm Collection

Plan
#1359

BED	2
BATH	2
GARAGE	2 + Golf Cart Storage
LIVING	1,359 SQ FT
LANAI	192 SQ FT
ENTRY	58 SQ FT
GARAGE	536 SQ FT
TOTAL AREA UNDER ROOF	2,145 SQ FT



ELEVATION A

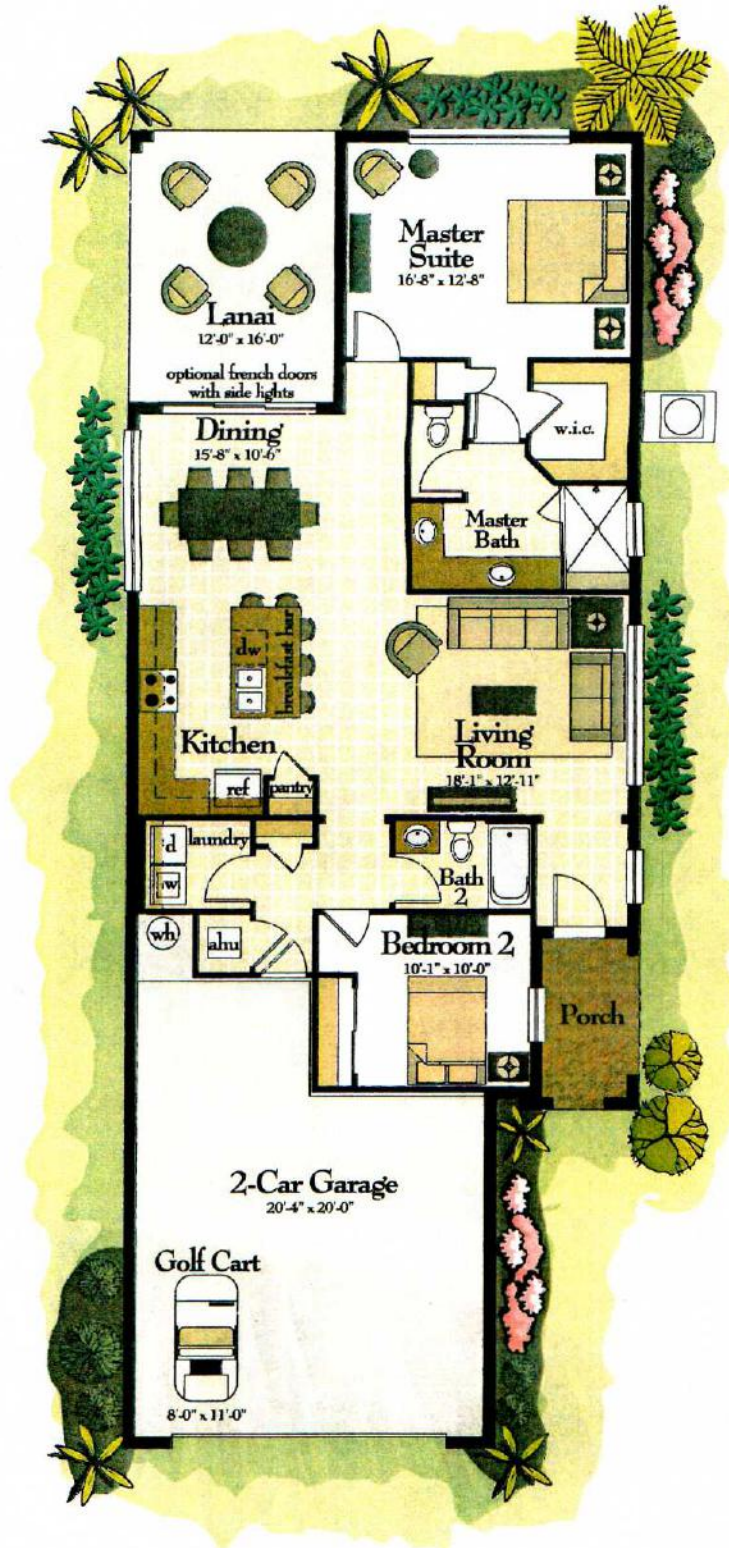


ELEVATION B

Gold Key Associates

The Key to Your Dreams

www.Solivita55-plus.com



Developer may change home design, materials, features, amenities, method of construction, prices, promotions, and features without notice. Availability subject to change. This is not an offer in states and jurisdictions where prior registration is required and void where prohibited by law. THE COMPLETE TERMS ARE IN AN OFFERING PLAN AVAILABLE FOR SPONSOR. FILE NOS. H00-008 AND H06-0027. CBC# 1254089 and CBCA179970 Copyright © 2012 AV Homes. All rights reserved. SOLIVITA®, SOLIVITA BY VITALIA™, and VITALIA™ are the exclusive trademarks and service marks of AV Homes. Pursuant to the Fair Housing Act, this housing is intended for occupancy by at least one person 55 years of age or better per home, although the occupants of a limited number of the homes may be younger, but no one under 18 years of age may be in permanent residence. Offer valid for primary residence only. For full details and disclosure please visit www.vitaliahomes.com/terms-use

SOLIVITA
BY VITALIA

(863) 427-7000 solivita.com 395 Village Drive, Kissimmee, FL 34759